



# Willman

 **ELECTRIC**

NATIONAL ACCOUNTS

# POWERFUL solutions



**Suzanne Ullman**  
President

*Ullman Electric was founded in 1985 in Cleveland, Ohio by Marc Ullman. Under the current leadership of Suzanne Ullman, President, and Ron Ullman, CFO, the company has evolved from providing just local electrical service to a full service national electrical solutions provider.*

*While we still remain a family run business today, we've proven our ability to provide innovative, cost-effective, and high quality products and services on projects throughout the United States of America.*

***Creative, competitive, and comprehensive.  
That's Ullman Electric.***

**POWERFUL**  
leadership

TRANSFORMERS, MDP-GH1/GH2



**Phillip G. Soroky**  
Project Executive

**216.695.5603**  
[psoroky@ullmanelectric.com](mailto:psoroky@ullmanelectric.com)

***From Concept to Completion.***

*Phil serves as the project executive, but he is much more than the title serves. With over 50 years of electrical industry experience, Phil has become an industry expert in developing creative and cost-effective solutions for electrical and technology projects. His project estimating abilities, product and material sourcing, and collaboration with engineers of record, design/build contractors, and partners is second-to-none.*

*Phil provides solid electrical design and engineering services, consulting services, and reliable customer service from the planning stage through commissioning of each project he takes on for Ullman Electric.*

*Phil is excited to bring his experience and vast knowledge to the table of any project, and to continue learning as the industry evolves with new technologies.*

**POWERFUL**  
project management



**Michael Roach**  
Director, National Accounts

216.965.8685  
mroach@ullmanelectric.com

***Drawing from Experience.***

*Mike is an IBEW electrician and project manager specializing in digital design and layout for various applications in the electrical industry.*

*Mike is proficient in 3D-modeling, rendering, animation, 2D drafting, AutoCAD, and 2D/3D layout. These are integrated into blueprints, shop drawings, and used for Total Stations and GPS equipment. Mike has spent the last 7 years transitioning his extensive 20+ years of field experience into project management, project coordination, and digital solutions for today's industry needs.*

**Tom Grabowski**  
Director, National Accounts

216.287.5348  
tgrabowski@ullmanelectric.com

***Field Advantage.***

*Tom is a second generation IBEW wireman with over 25 years of experience. Tom has been with Ullman Electric in Cleveland for over 20 years, and has served as a lead foreman for much of that time.*

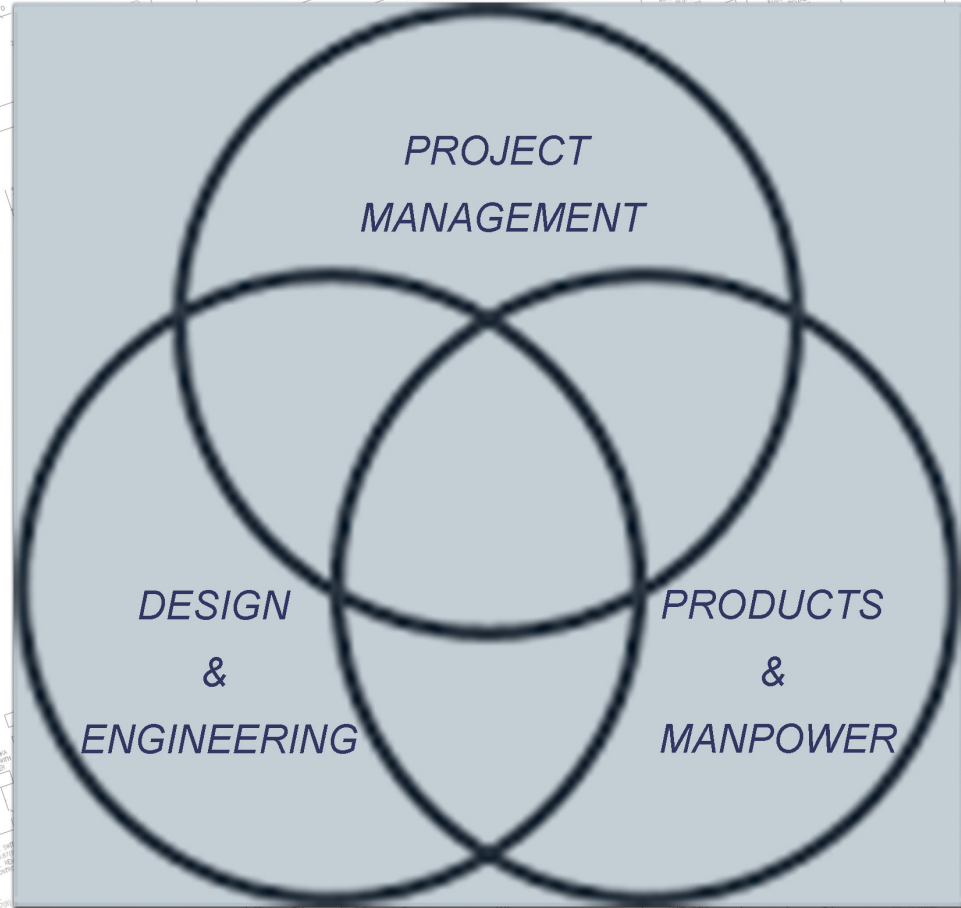
*Tom's field knowledge and experience allows him to effectively fill the role of project superintendant on multi-million dollar electrical projects. He provides leadership day-to-day in planning, project challenges mitigation, subcontractor and electrical team scheduling coordination, project materials and equipment purchasing, and meeting strict project specifications.*

**POWERFUL**  
team



**Collectively, we provide  
unmatched  
COMPREHENSIVE  
& CREATIVE SOLUTIONS.**

*“Teamwork is  
the secret  
that makes  
common people  
achieve uncommon  
results”  
– Ifeanyi Enoch Onuoha*



**POWERFUL**  
teamwork

## Integrated Project Solutions

[www.ipsvdc.com](http://www.ipsvdc.com)



Integrated Project Solutions, LLC

### **BIM Modeling.**

*IPS has worked on projects all over the United States, ranging from educational to healthcare, data centers, mixed use facilities, and more.*

*The company has produced sound, effective BIM solutions for whole-buildings, and individual scopes such as mechanical, electrical, plumbing, fire suppression, structural, etc. to assist Owners, General Contractors, and Subcontractors in the planning and progression of construction work.*

## Osborn Engineering

[www.osborn-eng.com](http://www.osborn-eng.com)



**OSBORN**  
ENGINEERING

### **Electrical Engineer of Record.**

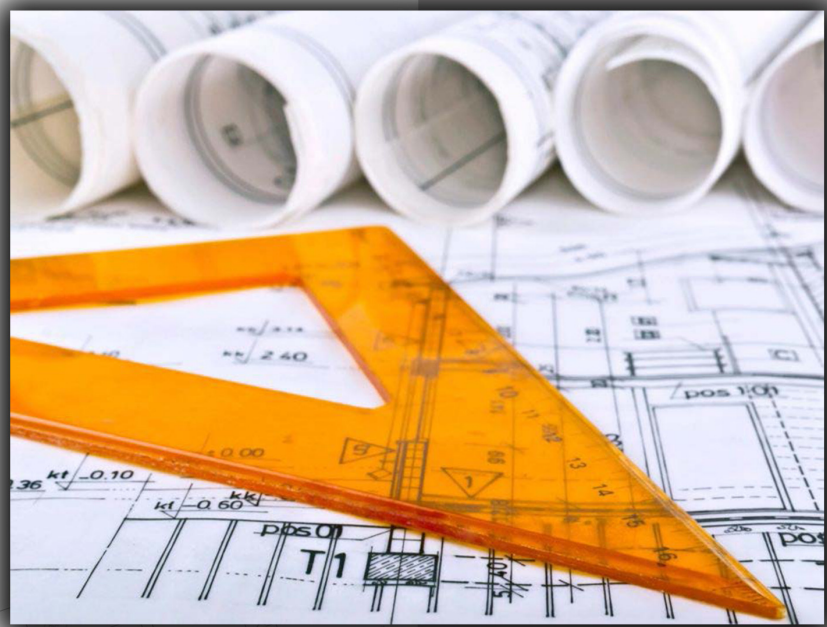
*Ullman Electric partners with Osborn Engineering. The company serves as the engineer of record for our projects.*

*Osborn Engineering, which began its successful business in Cleveland, Ohio, now operates throughout the United States. It was founded in 1892 and provides engineering services via nine regional offices in four states.*

**POWERFUL**  
partnerships



*Dedicated to the success of each project.*



*We're experienced enough to handle multi-faceted and complex electrical projects; while remaining grounded to our founding ideals of providing a personal, hands-on, and team-centered approach with all of our clients.*

**POWERFUL**  
project collaboration



# Your Project Deserves Our Strengths

*“Essentially, we are problem solvers; and we are always driving ourselves to the solution...”*

*-Phil Soroky*

## ■ DEFINING SCOPE

*We believe in accurately defining scope up front, to set accurate GMP Values.*

## ■ CREATIVITY

*We provide creative design options based on our combined experience, the national electrical code, and emerging technologies that meet construction needs and budgets.*

## ■ TEAM-CENTERED APPROACH

*Integration of design, project management, and construction to meet schedules and quality expectations.*

## ■ VALUE-CONSCIOUSNESS

*We maintain contract value with value-add options throughout the construction process.*

## ■ COMMUNICATION & COORDINATION

*We integrate all facets of the project including utility services for electric, on-site power generation, and communication.*

## ■ EXPERIENCE

*We've been in the electrical business since 1985. Our team has a proven history of successful project management, safety, and professionalism.*

**POWERFUL**  
capabilities

# We Care About Your Safety.

Violation-free  
safety record  
on projects with  
contractors including:  
Arco-Murray  
Clayco  
Whiting-Turner



# POWERFUL safety record

MEMBERS, MDP-GH1/GH2



# Willman

**ELECTRIC**



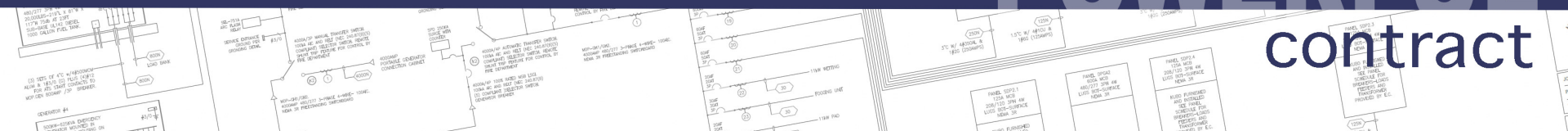
NATIONAL ACCOUNTS

# POWERFUL portfolio





# POWERFUL contract







**POWERFUL**  
redevelopment

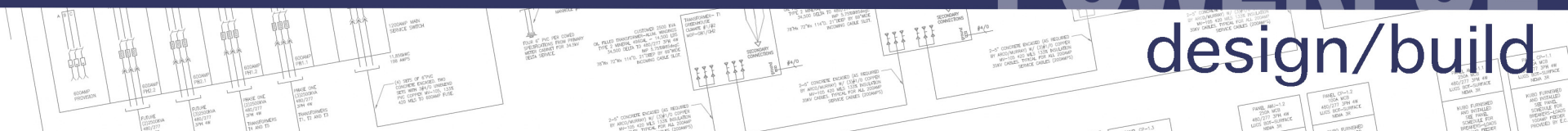






# PINECREST

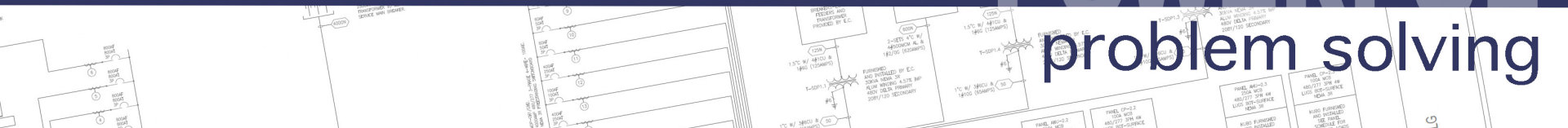
**POWERFUL**  
design/build







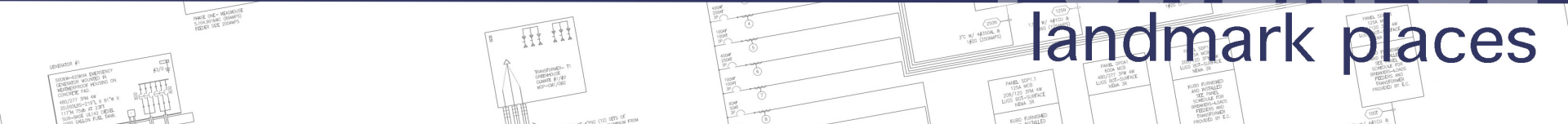
**POWERFUL**  
problem solving



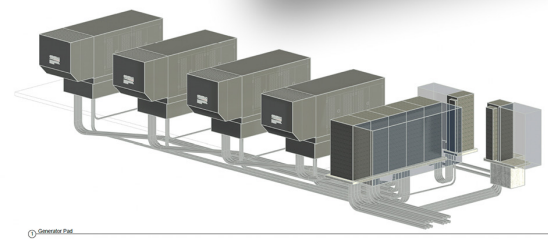
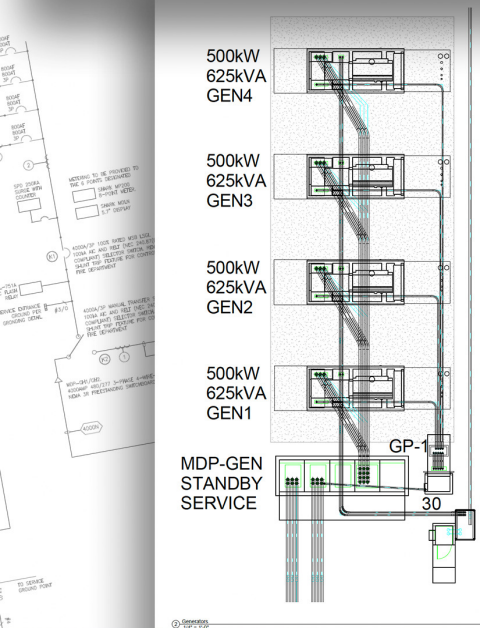
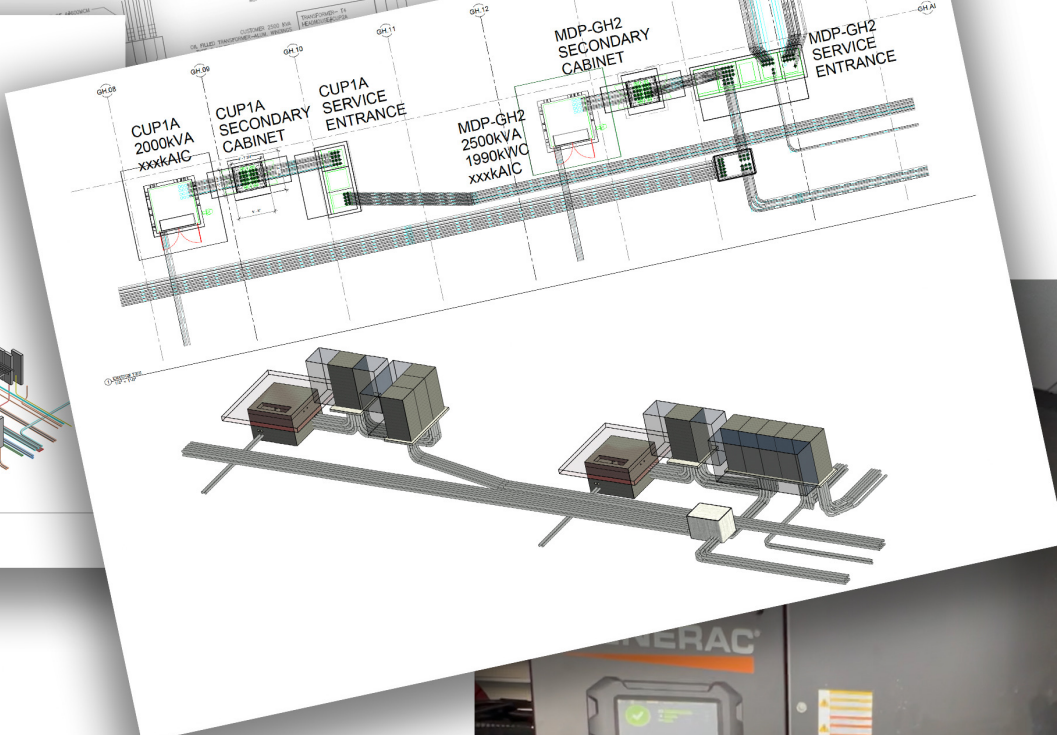
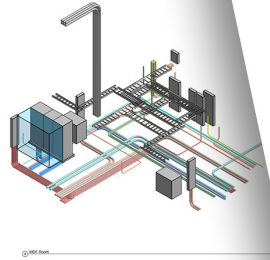
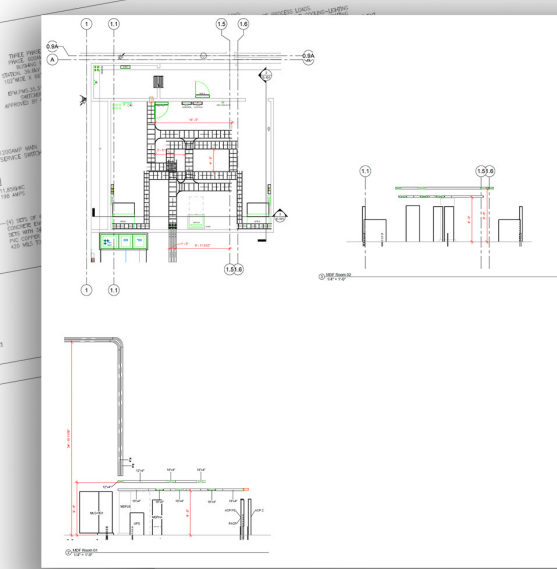




**POWERFUL**  
landmark places







MEDIUM VOLTAGE TRANSFORMERS, MDP-GH1/GH2

POWERFUL modeling

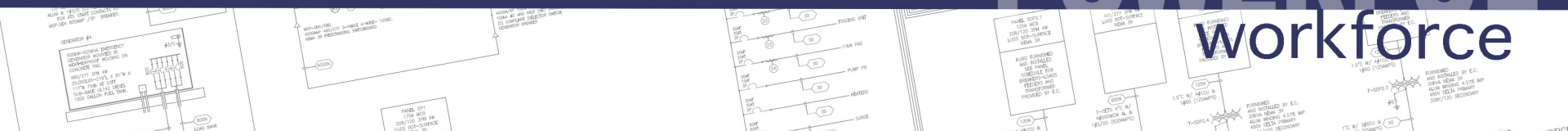








# POWERFUL workforce



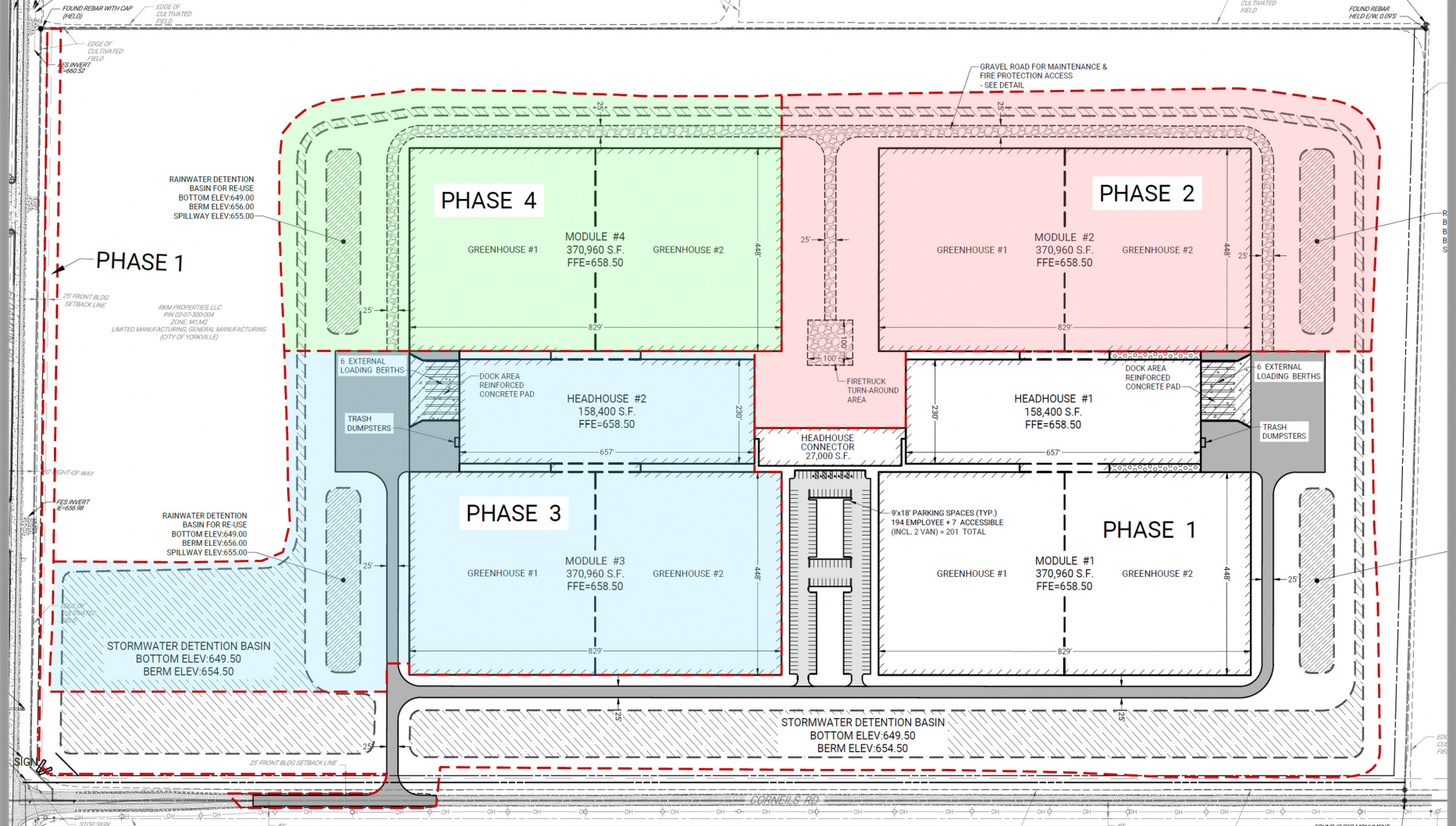




# POWERFUL engineering & product procurement

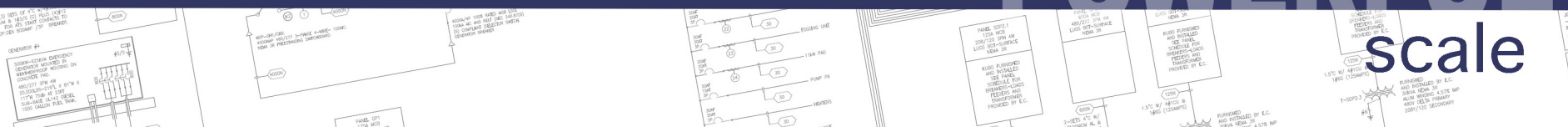






Each phase consists of an 8-acre glass enclosed greenhouse and 2 acre headhouse.  
**30 MW TOTAL SITE PROVISIONS | SIXTEEN 4000 AMP SERVICES**

**POWERFUL**  
 scale







**MBE / FBE / LPE  
Contractor**

**-  
NECA  
IBEW, LOCAL 38**

**-**

**National Accounts Team:  
*Airport Industrial Park  
3777 Engle Rd.  
Suite I  
Middleburg Hts, OH 44130***

**Headquarters:  
*3901 Chester Ave.  
Unit B  
Cleveland, OH 44114***

***[www.UllmanElectric.com](http://www.UllmanElectric.com)***

**We'll make your next project**

**POWERFUL**